



GMT MONTHLY MEMBERSHIP PROGRESS REPORT

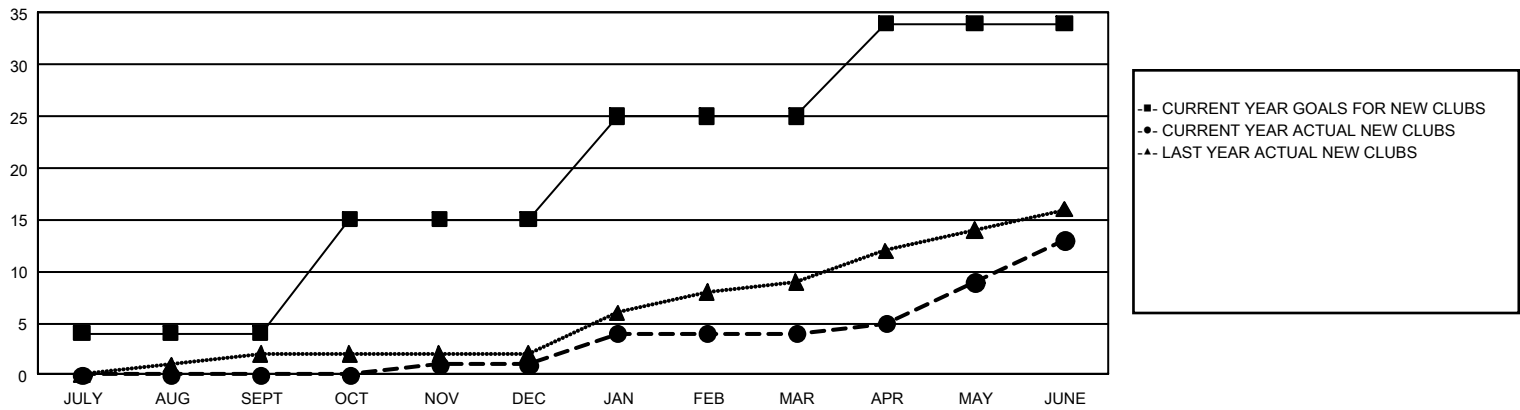
GAT Constitutional Area 2

Results as of: 6/30/2025

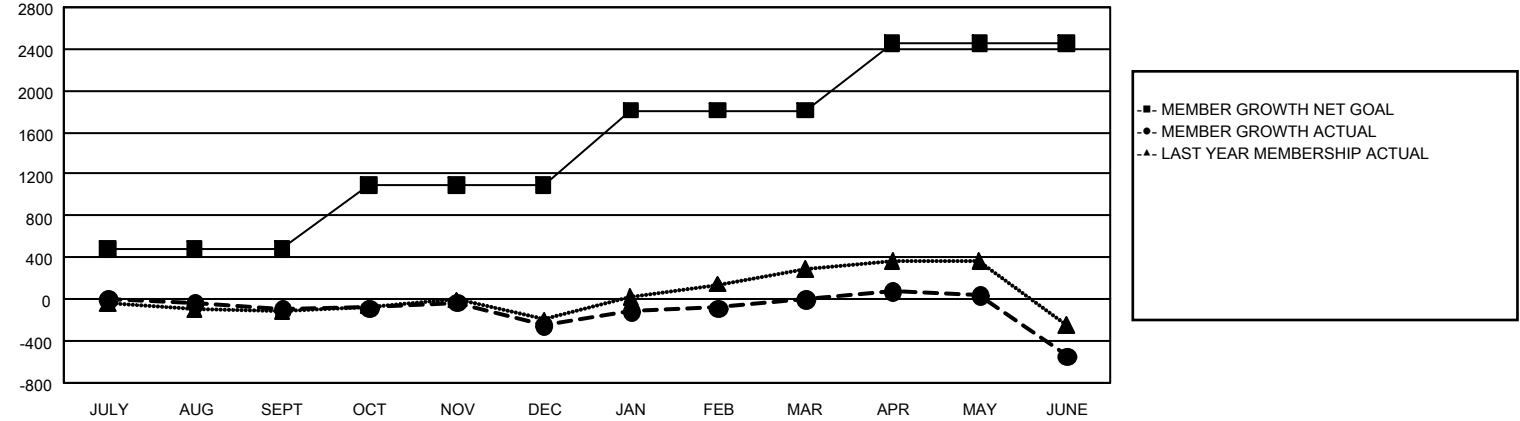
REPORT DOES NOT INCLUDE CLUBS IN UNDISTRICTED AREAS.

Clubs				Members			
RESULTS FOR 2024-2025				RESULTS FOR 2024-2025			
QUARTER	NEW CLUB GOAL	NEW CLUBS	DROPPED CLUBS	QUARTER	MEMBER GROWTH NET GOAL	MEMBER GROWTH ACTUAL	DROPPED MEMBERS ACTUAL (including transfers)
JULY/AUG/SEPT	4	0	2	JULY/AUG/SEPT	483	586	586
OCT/NOV/DEC	11	1	8	OCT/NOV/DEC	609	880	910
JAN/FEB/MAR	10	3	3	JAN/FEB/MAR	718	976	616
APR/MAY/JUNE	9	9	8	APR/MAY/JUNE	647	1,101	1,516

GOALS AND ACTUAL NEW CLUBS CUMULATIVE



GOALS AND ACTUAL MEMBERS CUMULATIVE



DROPPED CLUBS: 21		772 CLUBS OF 1,182 ADDED 1 OR MORE NEW MEMBERS	<u>GENDER DISTRIBUTION</u>	
			MALE	16,010 (62.60%)
			FEMALE	9,547 (37.33%)
<u>DROPPED MEMBERS</u>		CLICK HERE FOR CUMULATIVE MEMBERSHIP DATA		
DECEASED	396		TOTAL FAMILY UNIT MEMBERS 4,578	
CLUB CANCELLED	130			
OTHER	3,074		FAMILY MEMBERS PAYING HALF DUES 2,352	
TOTAL	3,600			